

# Home and Land Package



Classic Plus Facade

## Birling Estate

10, Main Street, Bringelly NSW  
2556

Expected Rego Date: January 2025

# \$486,900

Land Size: m<sup>2</sup>

House Price ONLY

## Terracotta 23

The Terracotta is a practical home with an understated elegance. The two-storey 4 bedroom plus study design offers the perfect solution for those wanting to maximize the size of their garden whilst still catering to the needs of the entire family inside.

4   2.5   1   211.58m<sup>2</sup>

+ IP: Investment Inclusions Package  
LP: Landscape Package

Living Area	176.74m <sup>2</sup>	Porch	4.08m <sup>2</sup>
Garage	19.90m <sup>2</sup>		
Alfresco	10.86m <sup>2</sup>		

### Our Guarantees

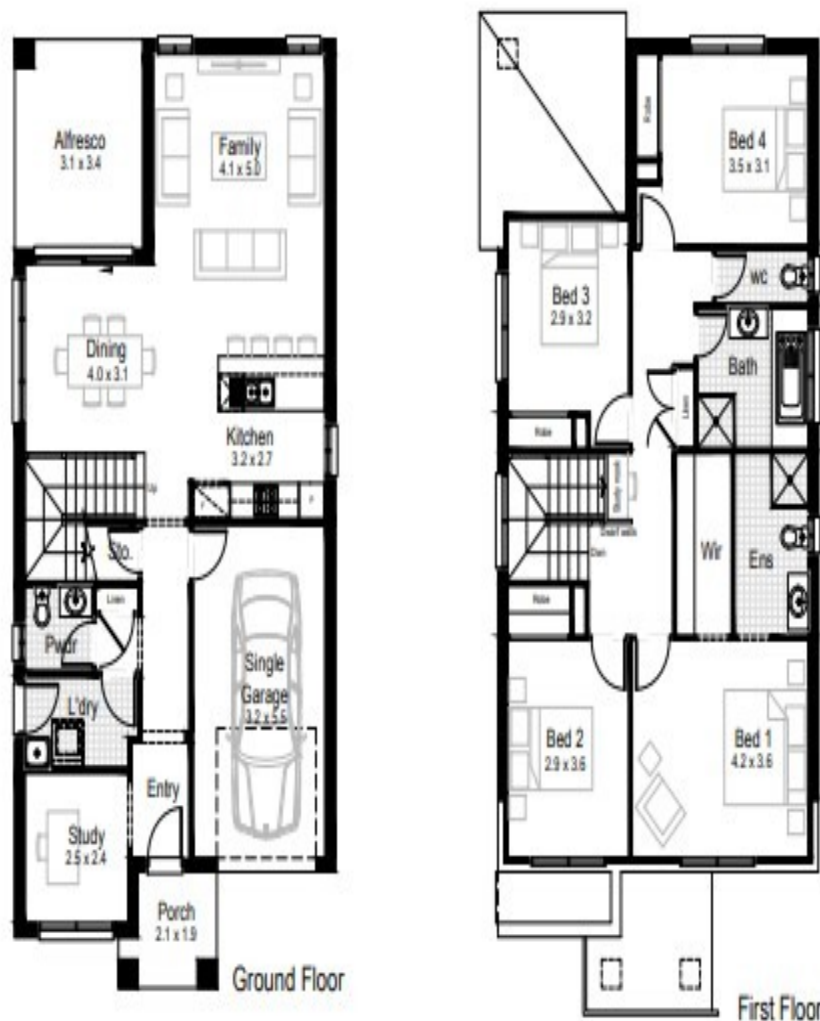
At Hudson Homes we understand the importance of time and money. And since delivering upon our promise to you is at the heart of everything we do, every customer is offered a peace-of-mind and security with our guarantee and our time frame guarantee.

ENQUIRE NOW

Christine Hunt

0435473361

enquiries@hudsonhomes.com.au



**IP**

**IP: Investment Inclusions Package**

**LP**

**LP: Landscape Package**

- Ducted air conditioning throughout
- LED downlights throughout
- Automatic garage door with 2 remotes
- Fully-finished tiled outdoor alfresco
- Roller blinds, flyscreens and keyed locks throughout
- Fully-lined kitchen cabinetry with overhead cupboards and bulkhead
- Kitchen 20mm stone benchtop with large sink
- 600mm stainless steel gas cooktop and recirculating pull-out rangehood
- Stainless steel 600mm electric oven
- Stainless steel dishwasher, installed into kitchen cabinets

- Contemporary floating-style vanities, mirrors and accessories to all bathrooms
- 1650mm bathtub as indicated in floorplan
- Ceramic tiles to bathroom, ensuite and laundry
- Ceramic tiles to entry, family, kitchen, meals areas, alfresco and patio
- Carpet to bedrooms and all other internal areas
- Quality paint system to ceilings and walls
- Slimline water tank
- NBN provision

- Australian native shrubs and edging
- Fencing with side gate
- Coloured concrete driveway and path
- Clothesline, letterbox and house numbers

**ENQUIRE NOW**

**Christine Hunt**

**0435473361**

**enquiries@hudsonhomes.com.au**

**Our Guarantees**

At Hudson Homes we understand the importance of time and money. And since delivering upon our promises to you is at the heart of everything we do, every customer is offered the peace-of-mind and security with our **'fixed price guarantee'** and our **'time-frame guarantee'**.