

# Home and Land Package



Classic Facade

## Watagan Park Cooranbong

Proposed Lot, Proposed Road,  
Cooranbong NSW 2265

Expected Rego Date: January 2025

# \$394,900

Land Size: m<sup>2</sup>

House Price ONLY

## Azure 19

The Azure is ideal for the family that enjoys bringing people together. With its large open plan living and entertaining areas, its vast kitchen with big island bench and an outdoor alfresco area all combine to bring a breath of fresh air to a lovely family home.

3 2 2 177.08m<sup>2</sup>

+ IP: Investment Inclusions Package  
LP: Landscape Package

Living Area	132.40m <sup>2</sup>	Porch	1.68m <sup>2</sup>
Garage	32.89m <sup>2</sup>		
Alfresco	10.11m <sup>2</sup>		

### Our Guarantees

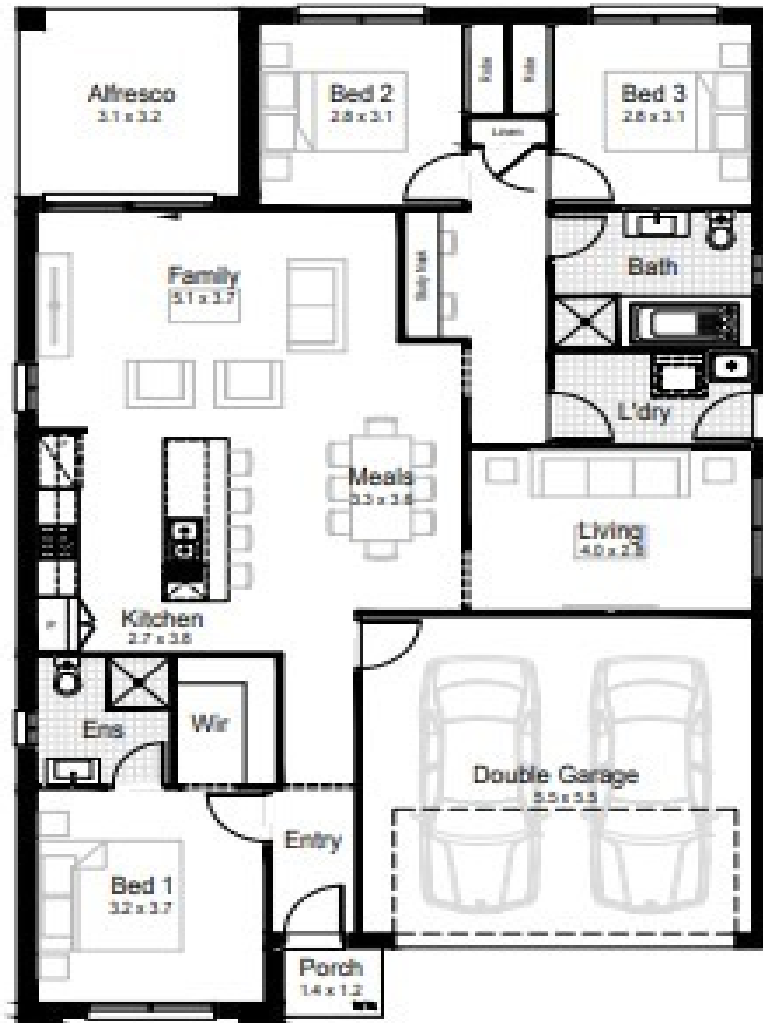
At Hudson Homes we understand the importance of time and money. And since delivering upon our promised to you is at the heart of everything we do, every customer is offered a peace-of-mind and security with our guarantee and our time frame guarantee.

ENQUIRE NOW

Gary Rees

0429 850 465

enquiries@hudsonhomes.com.au



**IP** IP: Investment Inclusions Package + **LP** LP: Landscape Package

- Ducted air conditioning throughout
- LED downlights throughout
- Automatic garage door with 2 remotes
- Fully-finished tiled outdoor alfresco
- Roller blinds, flyscreens and keyed locks throughout
- Fully-lined kitchen cabinetry with overhead cupboards and bulkhead
- Kitchen 20mm stone benchtop with large sink
- 600mm stainless steel gas cooktop and recirculating pull-out rangehood
- Stainless steel 600mm electric oven
- Stainless steel dishwasher, installed into kitchen cabinets

- Contemporary floating-style vanities, mirrors and accessories to all bathrooms
- 1650mm bathtub as indicated in floorplan
- Ceramic tiles to bathroom, ensuite and laundry
- Ceramic tiles to entry, family, kitchen, meals areas, alfresco and patio
- Carpet to bedrooms and all other internal areas
- Quality paint system to ceilings and walls
- Slimline water tank
- NBN provision

- Australian native shrubs and edging
- Fencing with side gate
- Coloured concrete driveway and path
- Clothesline, letterbox and house numbers

**ENQUIRE NOW**

**Gary Rees**

**0429 850 465**

**enquiries@hudsonhomes.com.au**

**Our Guarantees**

At Hudson Homes we understand the importance of time and money. And since delivering upon our promises to you is at the heart of everything we do, every customer is offered the peace-of-mind and security with our **'fixed price guarantee'** and our **'time-frame guarantee'**.