

Olive

o-live: a Mediterranean evergreen tree grown for its fruit.

The Olive is thoughtfully designed with all the essentials to suit the needs of a growing family. Featuring generously sized bedrooms and a cosy home theatre, it offers both comfort and room to thrive.

PERFECT FOR



Big families



Entertainers



Growing families



Home theatre option



First home buyers



Scullery included



Facades



Other compatible facades

Aspen
Bayside
Contemporary
Crest

Eden
Hillsdale
Infinity
Majestic

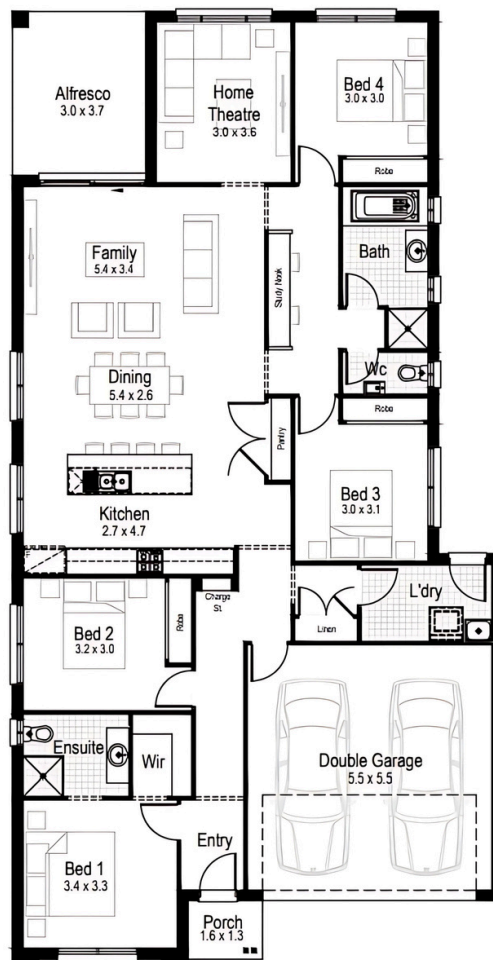
12.87 m

MINIMUM LOT WIDTH

STCC (Subject to Council Conditions)

Olive 23

4 2 2



Living area
164.43 m²



Garage
33.06 m²



Alfresco
11.16 m²



Porch
2.21 m²



Overall width
11.16 m



Overall length
21.47 m



Total area
210.86 m²

COMPLETE YOUR DREAM HOME

SELECT AN INCLUSIONS PACKAGE
TO SUIT YOUR STYLE AND BUDGET



WE CALL THEM NECESSITIES. NOT UPGRADES

When our team created our range of inclusions packages, we decided to select items that you will need at every stage of your life. That's why our standard inclusions packages include:



Air Conditioning



Automatic Garage Door



Tiled Outdoor Alfresco



Site Costs for Standard Lot*



**Carpet and Tiles
Throughout**



**Quality Stainless Steel
Appliances**



**Built-in Robes with
Mirrored Sliding Doors**



PLUS SO MUCH MORE



Pick up a brochure or visit hudsonhomes.com.au

*Site costs for a standard, cleared block with up to 1m fall across the building platform and up to M class slab



hudsonhomes.com.au

1300 246 700

Let's be friends

