

# HUDSON HOMES

## House Only Price



CLASSIC PLUS

### 1895 Camden Valley Way

12 x 25 Lots Camden Valley Way  
HORNINGSEA PARK NSW 2171

Starting From

# \$379,900

Land Size: 1204.3 m<sup>2</sup> Land Price: N/A

 4
  2
  2
  180.82 m<sup>2</sup>

## ONYX 19

The Onyx is the family home that keeps on giving. Designed to feel much bigger than it is, this single storey design features multiple living areas throughout the home, so there is room for everyone for every occasion.

FHB
LP
**FHB: First Home Buyer Inclusions Package**  
**Landscape Package**

See next page for details

House Length	20.63m
Garage	10.79m
Living Room	135.55
Garage	33.26
Alfresco	10.77
Porch	2.24

### Our Guarantees

At Hudson Homes we understand the importance of time and money. And since delivering upon our promise to you is at the heart of everything we do, every customer is offered peace-of-mind and security with our **quality build guarantee** and our **time frame guarantee**.



31-01-2025

**ENQUIRE NOW**

TREVOR LEBRETON

0438872448

trevor.lebreton@hudsonhomes.com.au

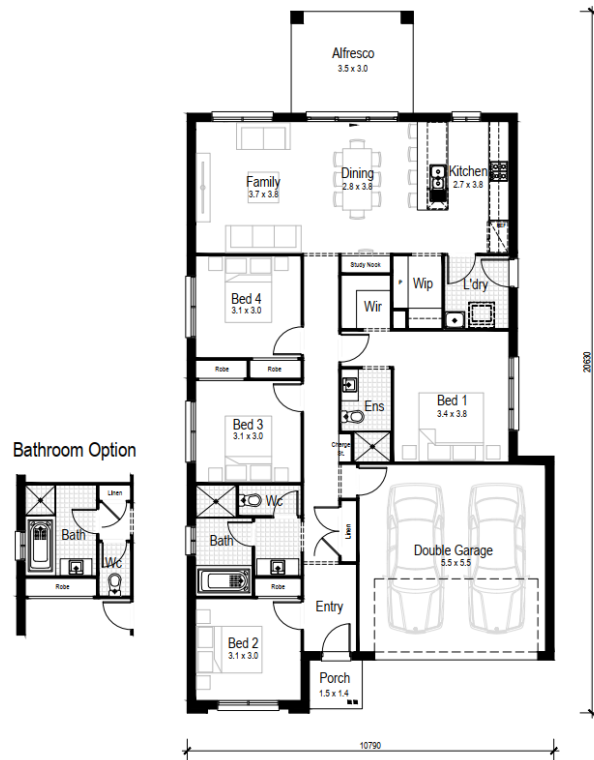
Indicative only



**SPECTRUM**  
DESIGN STUDIO

**COMPLIMENTARY  
CONSULTATION**

Includes a free personal  
home consultation with  
a professional designer



**FHB**

**FHB: First Home Buyer Inclusions Package**

+

**LP**

**LP: Landscape Package**

- Ducted air conditioning throughout
- LED downlights throughout
- Automatic garage door with 2 remotes
- Fully furnished tiled outdoor alfresco
- Roller blinds, flyscreens and keyed locks throughout
- Fully lined kitchen cabinetry with overhead cupboards and bulkhead
- Kitchen 20mm stone benchtops with large sink
- 600mm stainless steel gas cooktop and recirculating pull-out rangehood
- Stainless steel 600mm electric oven
- Stainless steel dishwasher, installed into kitchen cabinets
- Contemporary floating-style vanities, mirrors and accessories to all bathrooms

- 1650mm bathtub as indicated in floorplan
- Ceramic tiles to entry, family, kitchen, meal areas, alfresco and patio
- Carpet to bedrooms and all other internal areas
- Quality paint system to ceilings and walls
- NBN provision
- Finished driveway with path
- Lawn turf to front and backyard
- Front garden bed with Australian native shrubs and edging
- Fencing to suit covenant / estate requirements
- Colourbond letterbox
- Outdoor slimline single-fold clothesline
- House numbers



### Our Guarantees

At Hudson Homes we understand the importance of time and money. And since delivering upon our promise to you is at the heart of everything we do, every customer is offered peace-of-mind and security with our **quality build guarantee** and our **time frame guarantee**.

**ENQUIRE NOW**

**TREVOR LEBRETON**

**0438872448**

**trevor.lebreton@hudsonhomes.com.au**