

# HUDSON HOMES

## Home and Land Package



CLASSIC FACADE

### Grevillea Grove Narellan Vale

19 Holdsworth Drive Narellan Vale  
NSW 2567

Fixed Price

# \$1,119,900

Land Size: 451.0 m<sup>2</sup> Land Price: \$750,000

 4
  2
  2
  197.08 m<sup>2</sup>

## AZURE 21

The Azure is ideal for the family that enjoys bringing people together. With its large open plan living and entertaining areas, its vast kitchen with big island bench and an outdoor alfresco area all combine to bring a breath of fresh air to a lovely family home.



#### H1: Smart Inclusions Package

Home + Land: Bonus

See next page for details

House Length	18.95m
Garage	11.03m
Living Area	148.28
Garage	34.73
Alfresco	11.23
Porch	2.84



### Our Guarantees

At Hudson Homes we understand the importance of time and money. And since delivering upon our promise to you is at the heart of everything we do, every customer is offered peace-of-mind and security with our **quality build guarantee** and our **time frame guarantee**.

31-01-2025

ENQUIRE NOW

CHRISTINE HUNT

0435473361

christine.hunt@hudsonhomes.com.au

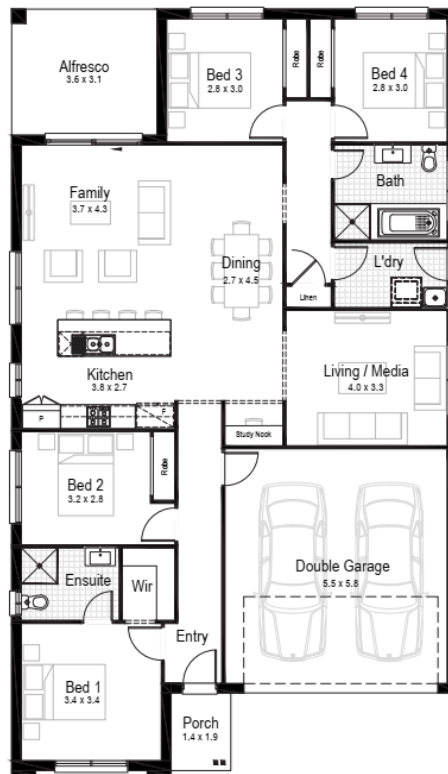
Indicative only



**SPECTRUM**  
DESIGN STUDIO

### COMPLIMENTARY CONSULTATION

Includes a free personal  
home consultation with  
a professional designer



## H1 H1: Smart Inclusions Package

- House facade as nominated
- Split System A/C
- Site costs and BASIX requirements
- Full lined kitchen cabinetry with overhead cupboards and bulkhead
- Laminate bench tops with rolled edge finish
- QUALITY appliances - stainless steel oven and cooktop, recirculating slide-out rangehood & dishwasher
- Contemporary floating style bathroom vanity and mirror, tiled splashback & 1675mm acrylic bathtub
- Sliding doors to built-in wardrobes
- Ceramic tiles to bathrooms, laundry, entry, family, kitchen and meal areas
- Carpet to all other internal areas
- 2440mm ceiling heights for single storey
- 2590mm ceiling heights for double storey (Ground floor only)
- Paint system to ceilings and walls
- Automatic garage door with 2 remotes
- Oyster style light fittings throughout
- Fully finished tiled outdoor alfresco
- Slimline water tank



## Home + Land: Bonus Bundle

- 20mm Stone benchtops to Kitchen
- 2590mm ceiling heights (Ground Floor Only)
- Night / Day ducted Air Conditioning
- Coloured concrete driveway
- Laminate Floors to Entry / Hall / Kitchen and Living areas
- Dishwasher
- Microwave
- Ducted Rangehood
- 900mm wide Appliances

**BONUS BUNDLE** **EXCLUSIVELY WITH THIS PACKAGE**  
Luxury items bundled together for even more great value

No Other Bonus Packages Applicable to H&L Packages



## Our Guarantees

At Hudson Homes we understand the importance of time and money. And since delivering upon our promise to you is at the heart of everything we do, every customer is offered peace-of-mind and security with our **quality build guarantee** and our **time frame guarantee**.

**ENQUIRE NOW**

**CHRISTINE HUNT**

**0435473361**

**christine.hunt@hudsonhomes.com.au**