

HUDSON HOMES

House Only Price



CLASSIC PLUS

1895 Camden Valley Way

307 and 311 Camden Valley Way
HORNINGSEA PARK NSW 2171

Starting From

\$277,900

Land Size: 1204.3 m² Land Price: N/A



SAGE 12

The Sage is a home design known for making the most of small spaces. With its petite frame, this single storey home maximises the natural light throughout, which floods the open plan living areas and flows out to the large alfresco.

FHB **LP** **FHB: First Home Buyer Inclusions Package Landscape Package**

See next page for details

House Length	16.65m
Garage	8.51m
Living Area	94.88
Garage	20.23
Alfresco	11.67
Porch	1.94

Our Guarantees

At Hudson Homes we understand the importance of time and money. And since delivering upon our promise to you is at the heart of everything we do, every customer is offered peace-of-mind and security with our **quality build guarantee** and our **time frame guarantee**.



31-01-2025

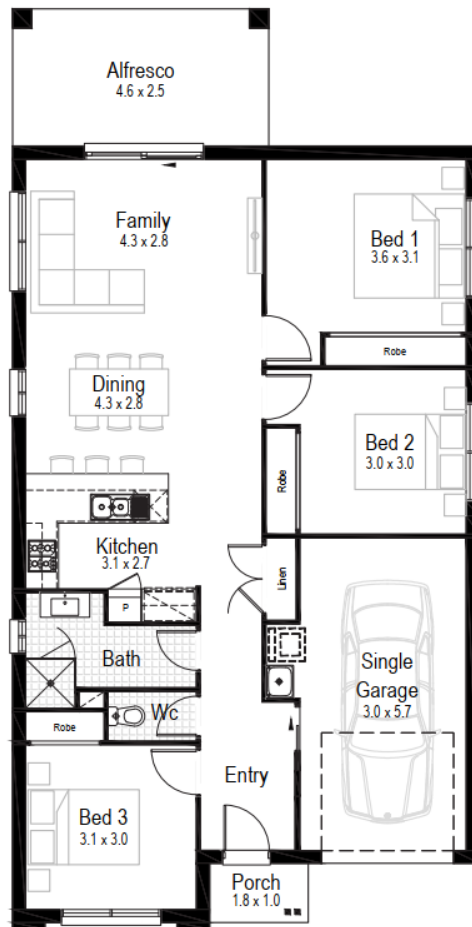
ENQUIRE NOW

TREVOR LEBRETON

0438872448

trevor.lebreton@hudsonhomes.com.au

Indicative only



SPECTRUM
DESIGN STUDIO

COMPLIMENTARY CONSULTATION

Includes a free personal
home consultation with
a professional designer

FHB FHB: First Home Buyer Inclusions Package + **LP** LP: Landscape Package

- Ducted air conditioning throughout
- LED downlights throughout
- Automatic garage door with 2 remotes
- Fully furnished tiled outdoor alfresco
- Roller blinds, flyscreens and keyed locks throughout
- Fully lined kitchen cabinetry with overhead cupboards and bulkhead
- Kitchen 20mm stone benchtops with large sink
- 600mm stainless steel gas cooktop and recirculating pull-out rangehood
- Stainless steel 600mm electric oven
- Stainless steel dishwasher, installed into kitchen cabinets
- Contemporary floating-style vanities, mirrors and accessories to all bathrooms
- 1650mm bathtub as indicated in floorplan
- Ceramic tiles to entry, family, kitchen, meal areas, alfresco and patio
- Carpet to bedrooms and all other internal areas
- Quality paint system to ceilings and walls
- NBN provision
- Finished driveway with path
- Lawn turf to front and backyard
- Front garden bed with Australian native shrubs and edging
- Fencing to suit covenant / estate requirements
- Colourbond letterbox
- Outdoor slimline single-fold clothesline
- House numbers



Our Guarantees

At Hudson Homes we understand the importance of time and money. And since delivering upon our promise to you is at the heart of everything we do, every customer is offered peace-of-mind and security with our **quality build guarantee** and our **time frame guarantee**.

ENQUIRE NOW

TREVOR LEBRETON

0438872448

trevor.lebreton@hudsonhomes.com.au